


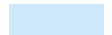

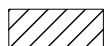



KEY

-  Powys County Council
-  Brecon Beacons National Park Authority- see separate mapping
-  Snowdonia National Park Authority
- Rivers**
-  Flood Zone 2
-  Flood Zone 3
- TAN15 Defended Zones**
-  Rivers
- Flood Defences**
-  Fluvial

Notes
 If no data is displayed on the map, or not all features are present, this indicates that the respective flood source or features are not present within this area.

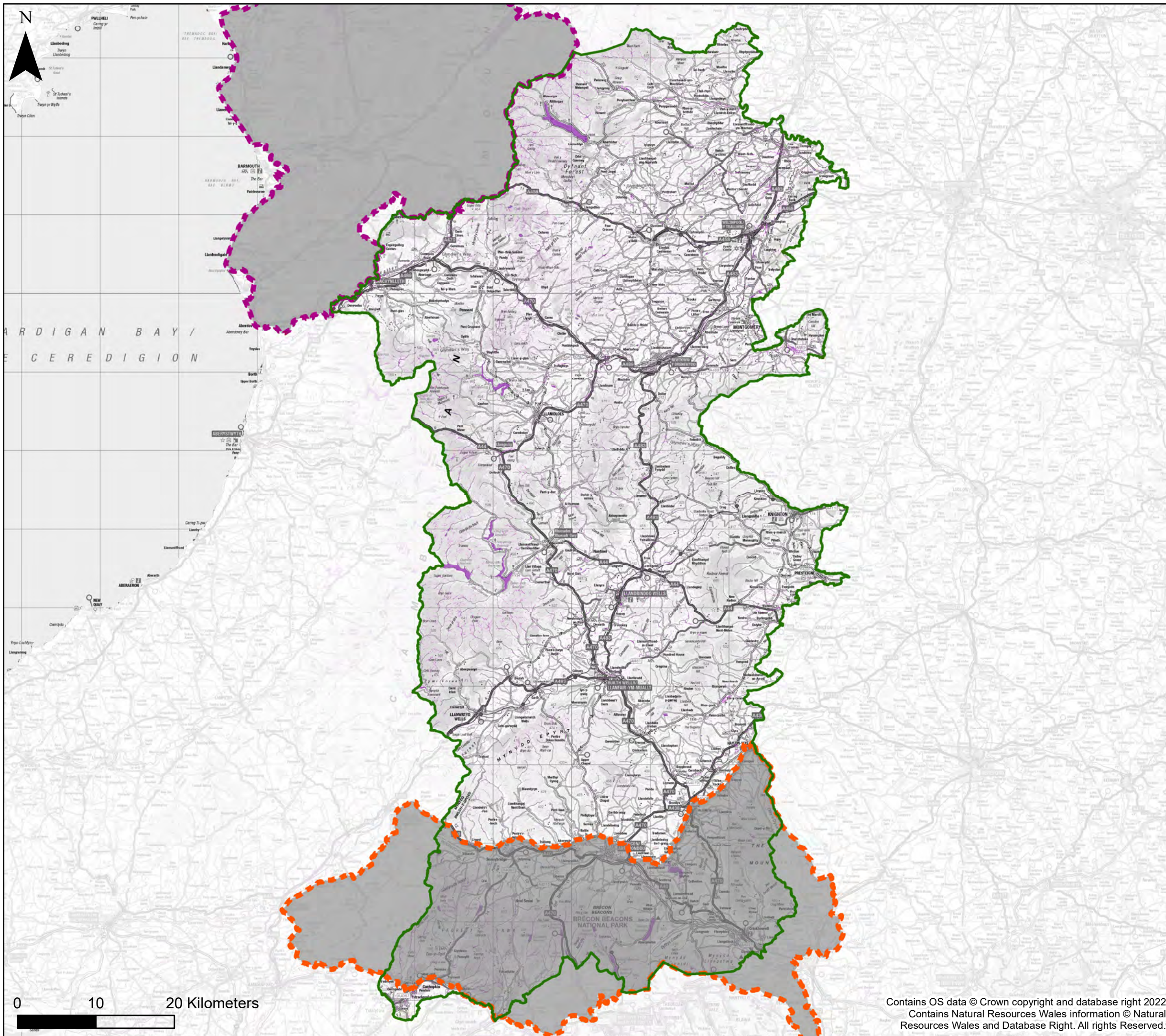


Powys County Council
 Stage 1 Strategic Flood
 Consequences Assessment
Flood Map for Planning- Rivers

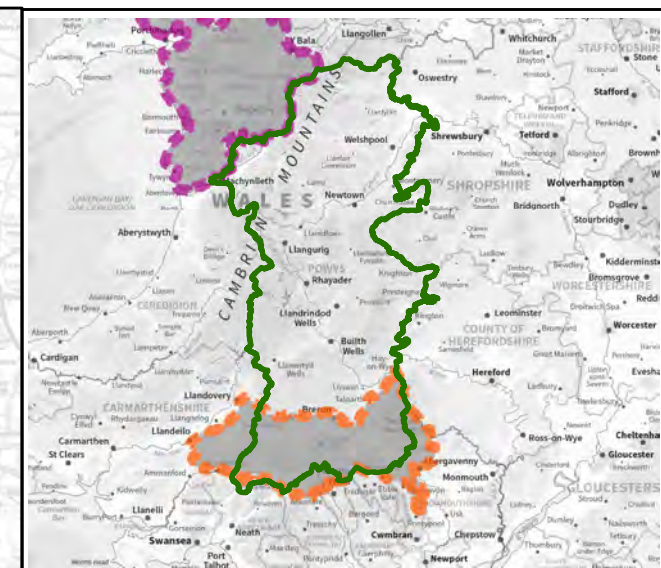
This document is the property of Jeremy Benn Associates Ltd. It shall not be reproduced in whole or in part, nor disclosed to a third party, without the permission of Jeremy Benn Associates Ltd.

Drawn	HB	20/09/2022
Checked	CB	23/09/2022
Approved	GB	26/09/2022






Contains OS data © Crown copyright and database right 2022
 Contains Natural Resources Wales information © Natural Resources Wales and Database Right. All rights Reserved.



ARDIGAN BAY / CEREDIGION



KEY

-  Powys County Council
-  Brecon Beacons National Park Authority- see separate mapping
-  Snowdonia National Park Authority
- Surface Water and Small Watercourses**
-  Zone 2
-  Zone 3

Notes
 If no data is displayed on the map, or not all features are present, this indicates that the respective flood source or features are not present within this area.

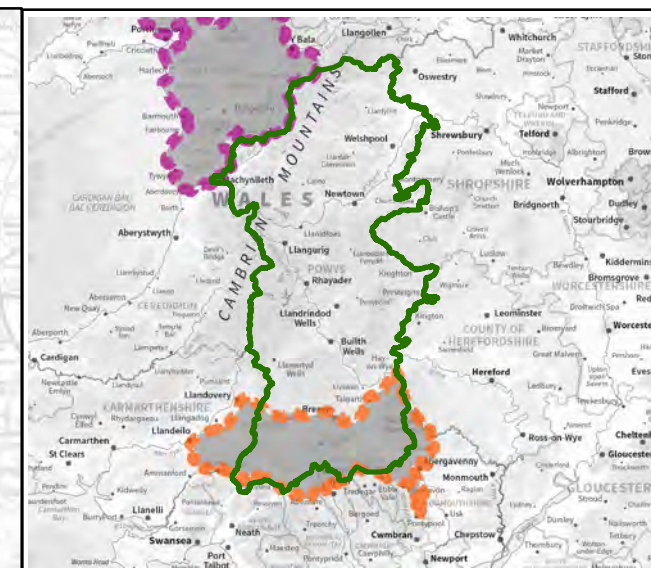
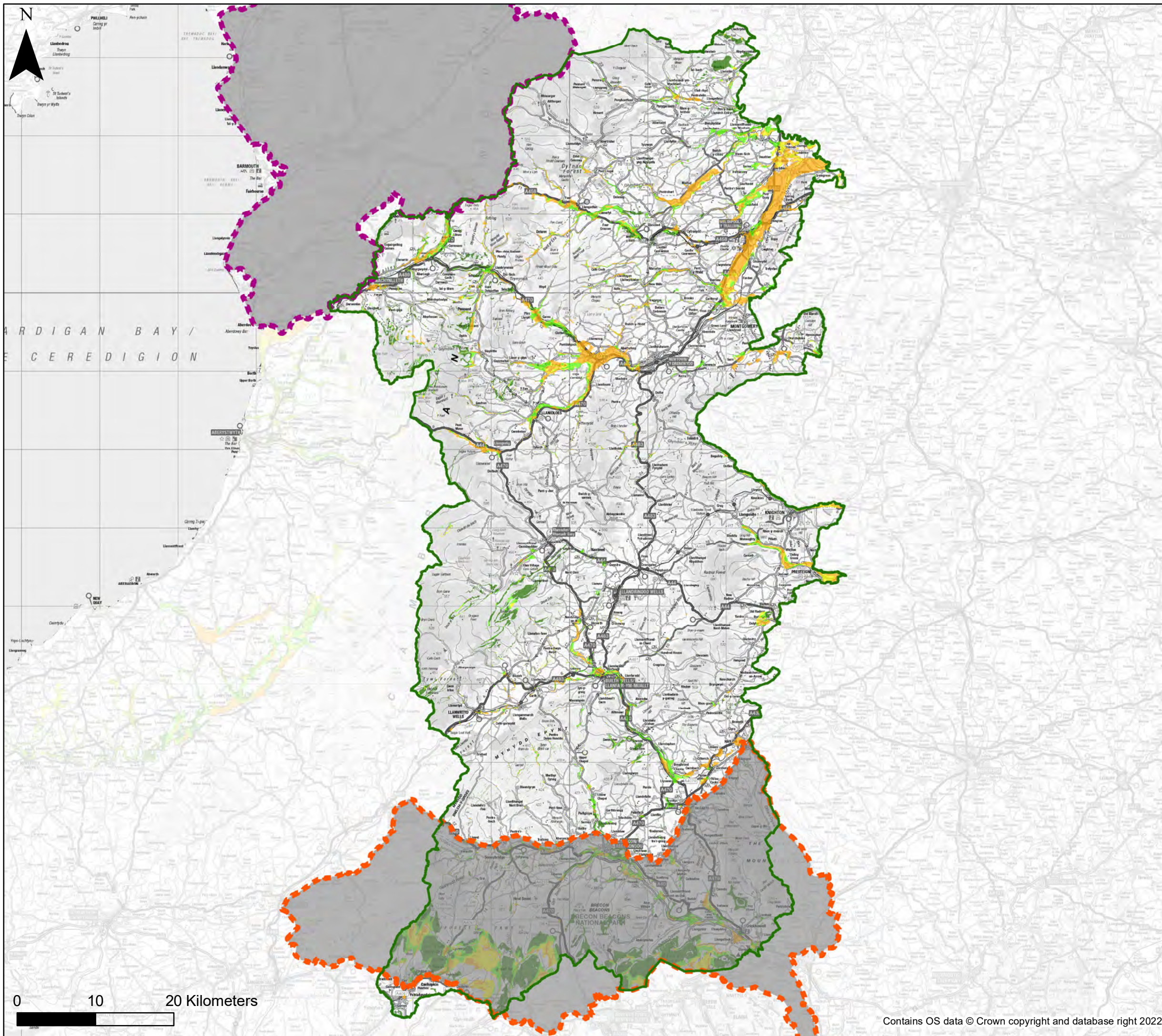


Powys County Council
Stage 1 Strategic Flood Consequences Assessment
Flood Map for Planning- Surface Water and Small Watercourses




This document is the property of Jeremy Benn Associates Ltd. It shall not be reproduced in whole or in part, nor disclosed to a third party, without the permission of Jeremy Benn Associates Ltd.





Drawn	HB	20/09/2022
Checked	CB	23/09/2022
Approved	GB	26/09/2022

Contains OS data © Crown copyright and database right 2022
 Contains Natural Resources Wales information © Natural Resources Wales and Database Right. All rights Reserved.



KEY

-  Powys County Council
-  Brecon Beacons National Park Authority- see separate mapping
-  Snowdonia National Park Authority

- Groundwater Depth**
Indicative Groundwater depth
-  Groundwater levels are at least 5m below the ground surface.
 -  Groundwater levels are between 0.5m and 5m below the ground surface.
 -  Groundwater levels are between 0.025m and 0.5m below the ground surface.
 -  Groundwater levels are either at or very near (within 0.025m of) the ground surface.

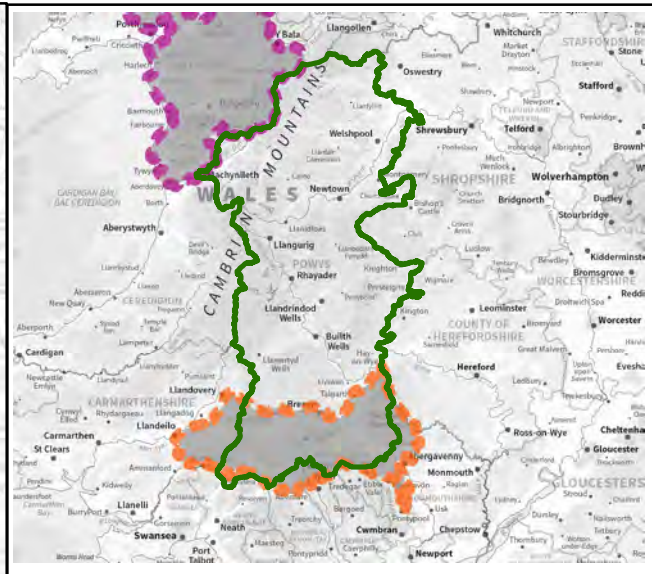
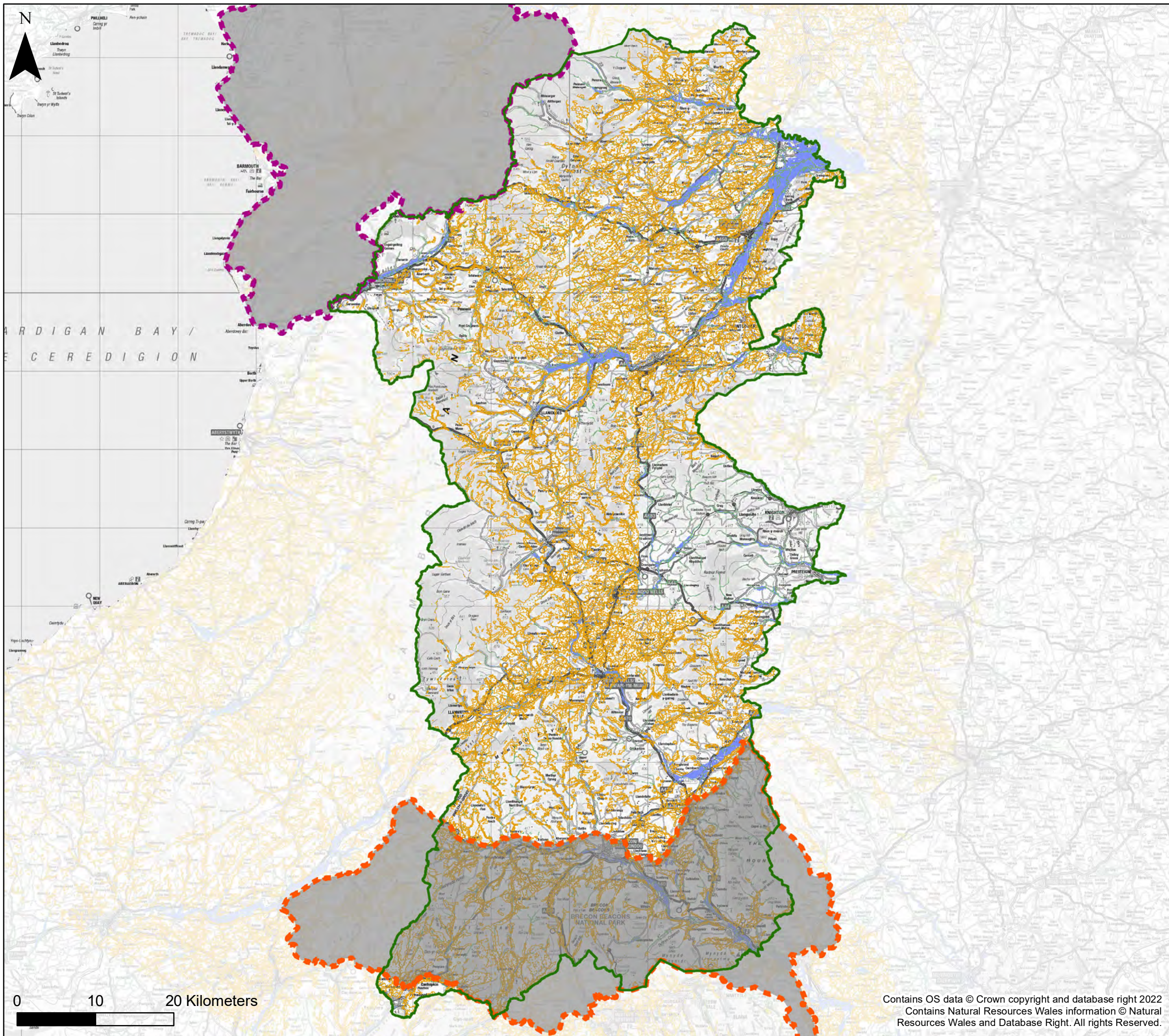
Notes
 The map provides an indicative assessment of groundwater depth on a 5m grid. Please refer to Section 4 of the SFCA Report for further detail of the dataset used to define the potential for groundwater emergence. If no data is displayed on the map, or not all features are present, this indicates that the respective source or features are not present within this area.









Powys County Council
 Stage 1 Strategic Flood
 Consequences Assessment
Groundwater Depth

This document is the property of Jeremy Benn Associates Ltd. It shall not be reproduced in whole or in part, nor disclosed to a third party, without the permission of Jeremy Benn Associates Ltd.

Drawn	HB	21/09/2022
Checked	CB	22/09/2022
Approved	GB	23/09/2022



KEY

-  Powys County Council
-  Brecon Beacons National Park Authority- see separate mapping
-  Snowdonia National Park Authority
-  Wider Catchment Woodland Potential
-  Riparian Woodland Planting Potential
-  Floodplain Woodland Planting Potential

Notes
 This map shows areas for woodland planting potential. Further data relating to areas for potential attenuation features is provided as part of the Natural Resources Wales Working with Natural Processes dataset, but these potential attenuation features aren't visible on this scale of mapping. The attenuation features are shown on the local maps. If no data is displayed on the map, or not all features are present, this indicates that the respective flood source or features are not present within this area.
 The Working with Natural Processes in Wales: Wider Catchment Woodland Potential dataset is based on the British Geological Survey (BGS): 50k Onshore Geology Data. This BGS data has squares missing where BGS have not surveyed the area. As the BGS data did not exist in parts of Powys NRW were unable to create the Wider Catchment Woodland Potential dataset in this area.

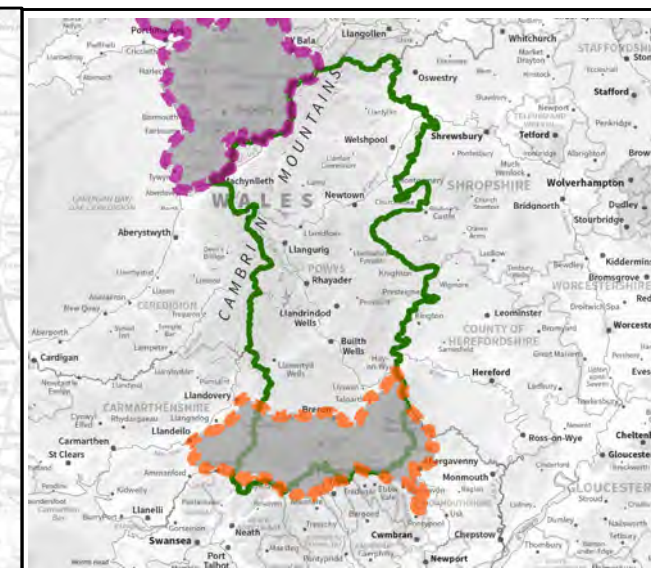
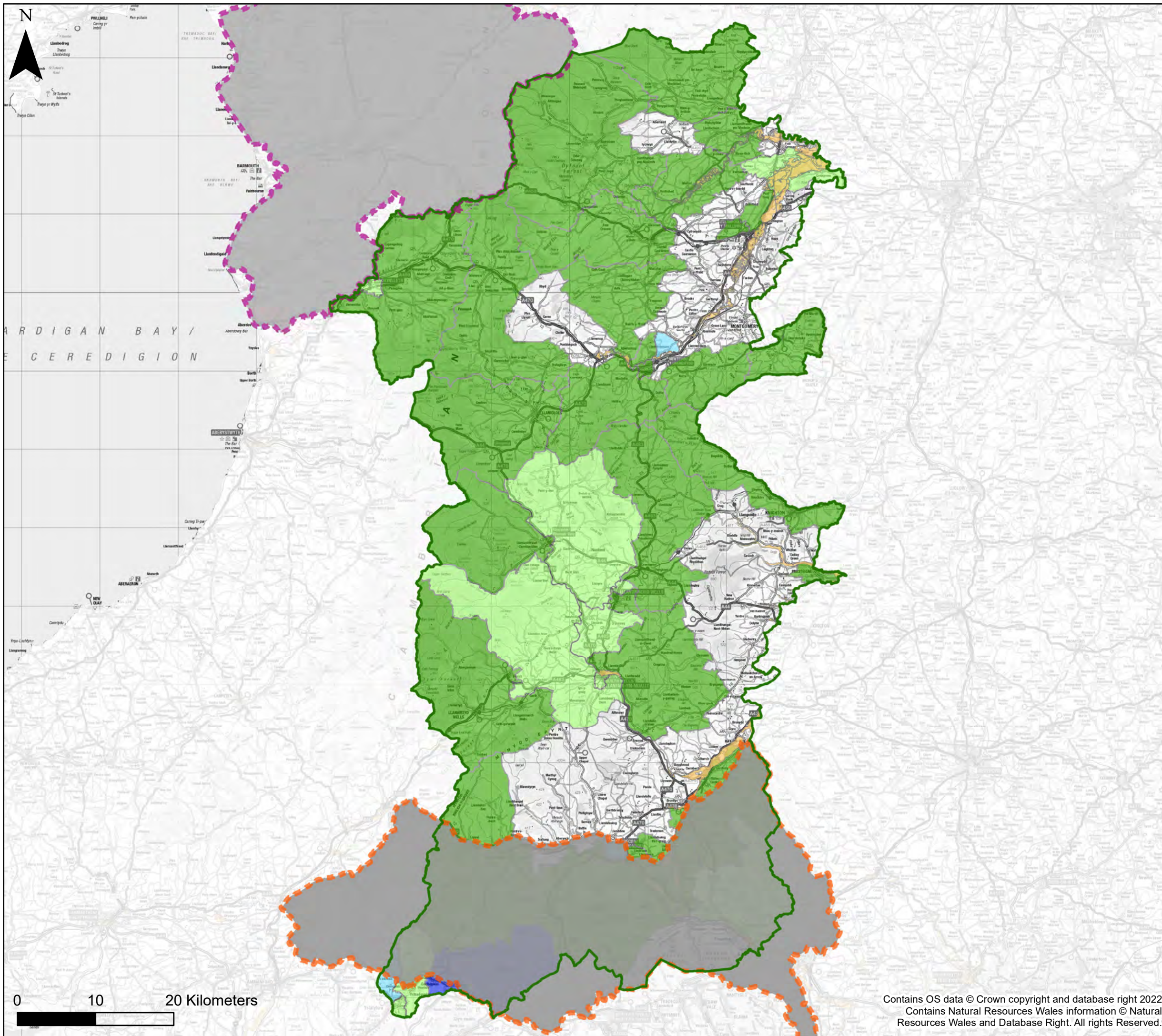


Powys County Council
 Stage 1 Strategic Flood Consequences Assessment
Working with Natural Processes - Potential Mapping






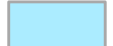

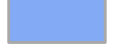


This document is the property of Jeremy Benn Associates Ltd. It shall not be reproduced in whole or in part, nor disclosed to a third party, without the permission of Jeremy Benn Associates Ltd.

Drawn	HB	21/09/2022
Checked	CB	22/09/2022
Approved	GB	23/09/2022

Contains OS data © Crown copyright and database right 2022
 Contains Natural Resources Wales information © Natural Resources Wales and Database Right. All rights Reserved.



KEY

-  Powys County Council
 -  Brecon Beacons National Park Authority- see separate mapping
 -  Snowdonia National Park Authority
 -  NRW Recorded Flood Extents
- Number of sewer flooding incidents by ward
- | | | | |
|---|---------|---|-------|
|  | No data |  | 10-25 |
|  | 1 - 5 |  | 25-30 |
|  | 5-10 |  | >30 |

Notes
 If no data is displayed on the map, or not all features are present, this indicates that the respective flood source or features are not present within this area.
 Sewer flooding data has been supplied by Dŵr Cymru Welsh Water and Severn Trent Water Limited

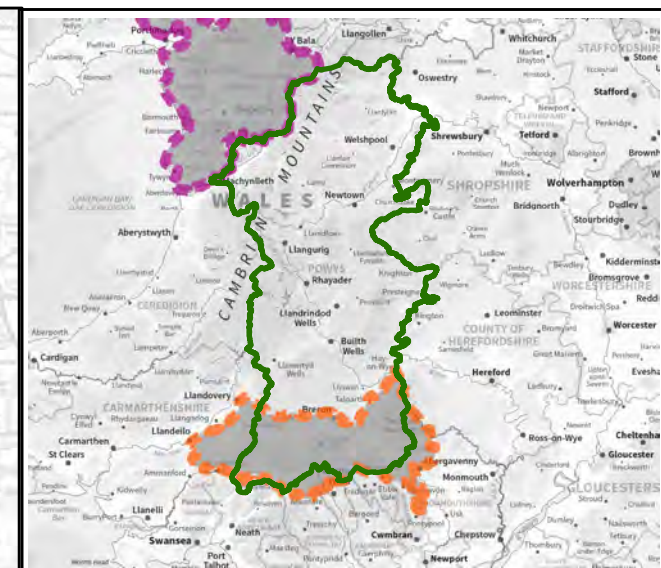
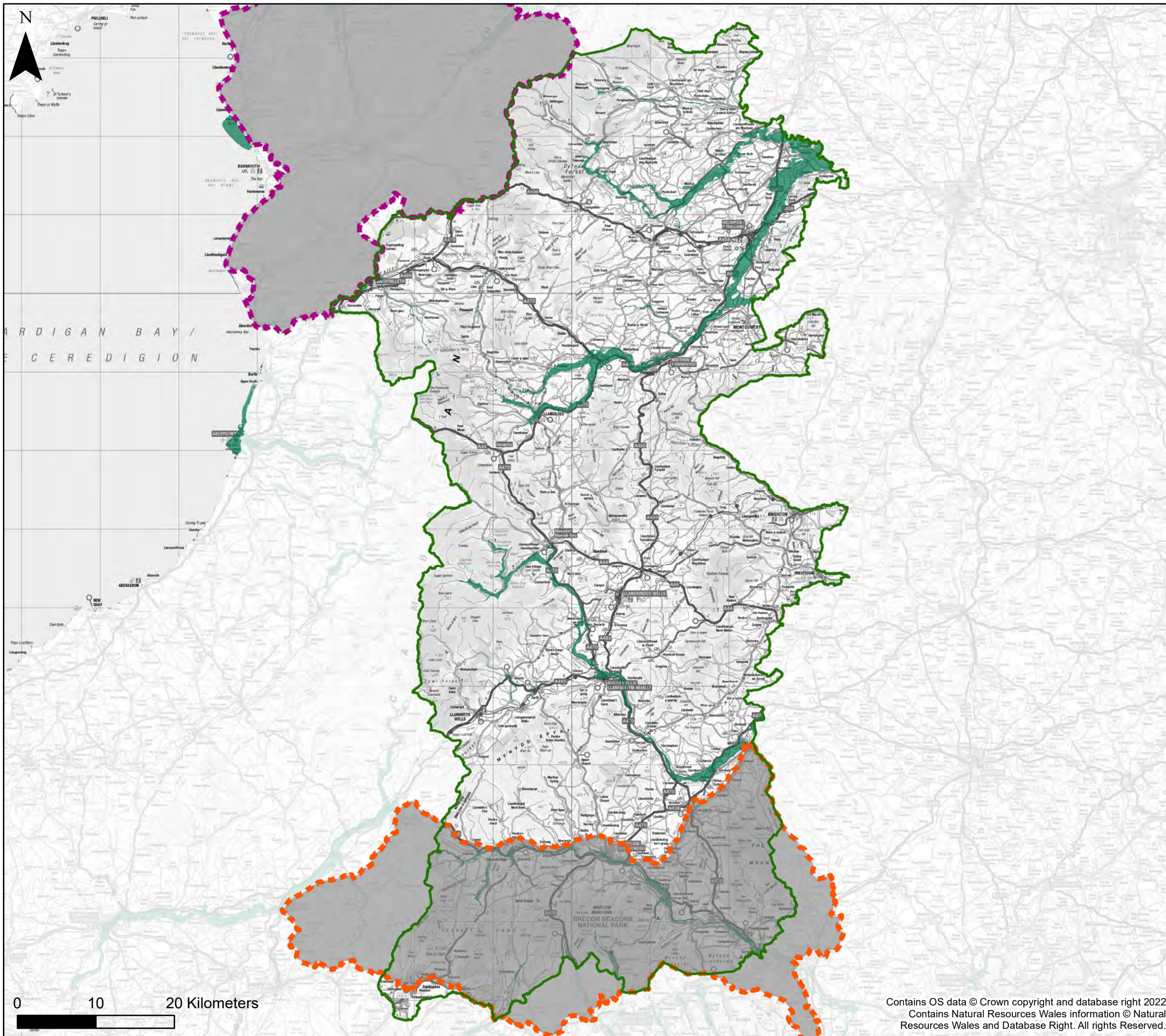


Powys County Council
Stage 1 Strategic Flood Consequences Assessment
Historic Flooding





This document is the property of Jeremy Benn Associates Ltd. It shall not be reproduced in whole or in part, nor disclosed to a third party, without the permission of Jeremy Benn Associates Ltd.

Drawn	HB	28/10/2022
Checked	CB	07/11/2022
Approved	GB	08/11/2022

Contains OS data © Crown copyright and database right 2022
 Contains Natural Resources Wales information © Natural Resources Wales and Database Right. All rights Reserved.



KEY

-  Powys County Council
-  Brecon Beacons National Park Authority- see separate mapping
-  Snowdonia National Park Authority
-  Flood Risk from Reservoirs

Notes
 If no data is displayed on the map, or not all features are present, this indicates that the respective flood source or features are not present within this area.



Powys County Council
Stage 1 Strategic Flood Consequences Assessment
Flood Risk from Reservoirs

This document is the property of Jeremy Benn Associates Ltd. It shall not be reproduced in whole or in part, nor disclosed to a third party, without the permission of Jeremy Benn Associates Ltd.

Drawn	HB	20/09/2022
Checked	CB	23/09/2022
Approved	GB	26/09/2022

Contains OS data © Crown copyright and database right 2022
 Contains Natural Resources Wales information © Natural Resources Wales and Database Right. All rights Reserved.